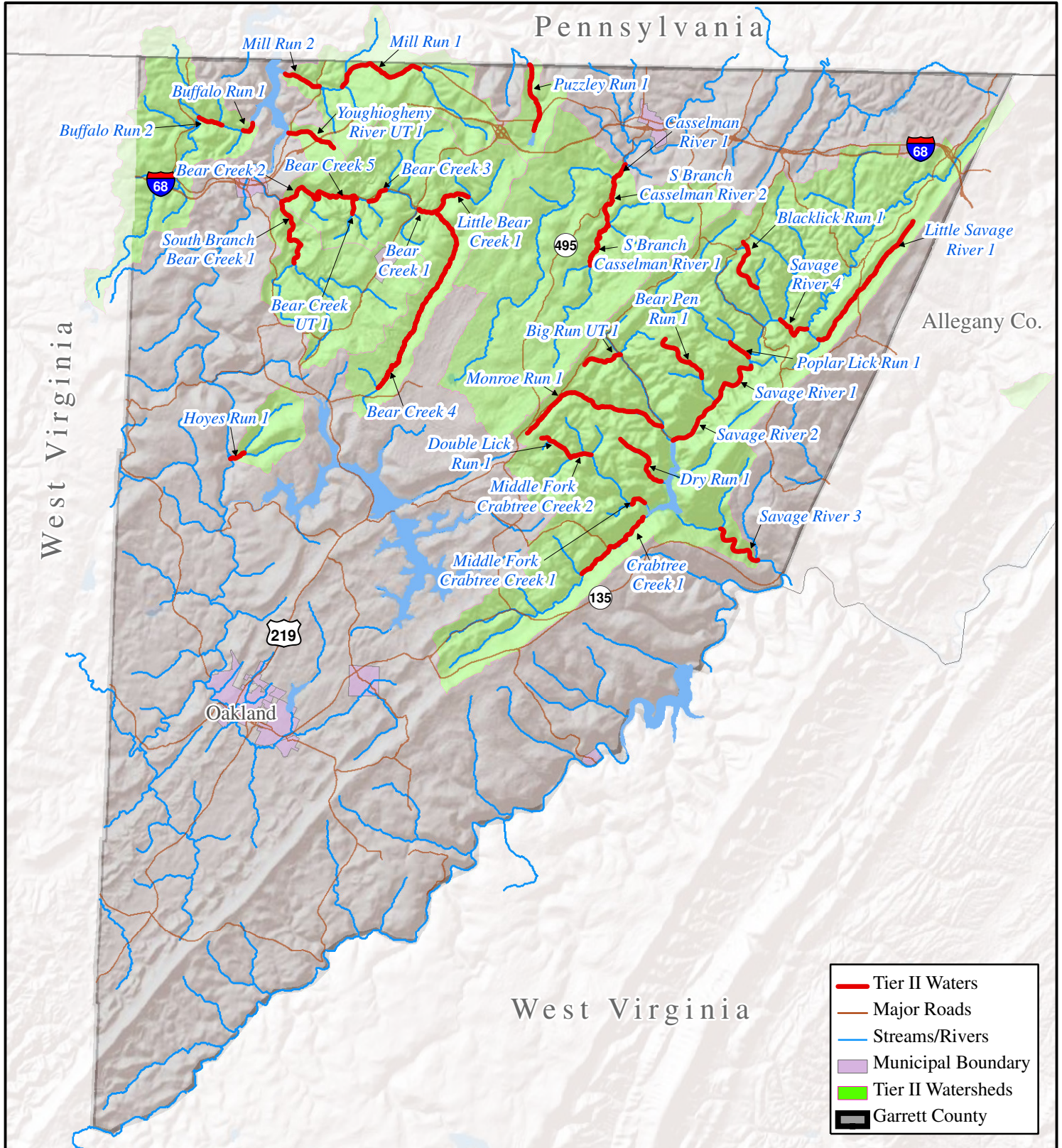
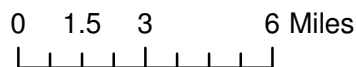


High Quality (Tier II) Waters in Garrett County

[Code of MD Regulations 26.08.02.04-1]



Martin O'Malley, Governor
 Anthony G. Brown, Lt. Governor
 Shari T. Wilson, Secretary
 Robert M. Summers, Deputy Secretary



Maryland Department of the Environment
 Science Services Administration
 Montgomery Park Business Center
 1800 Washington Boulevard
 Baltimore, Maryland 21230-1718

Date Map Prepared: March 2010

County:		Garrett					Baseline:	
Date Listed	Stream Name	12-digit Watershed	From Lat	From Long	To Lat	To Long	Fish IBI:*	Benthic IBI:*
2003	Bear Creek 1	050202010018	39.65018	-79.28886	39.65101	-79.29905	4.43	4.07
2007	Bear Creek 2	050202010018	39.65484	-79.36376	39.65316	-79.38472	4.67	4.00
2008	Bear Creek 3	050202010018	39.66006	-79.32011	39.65441	-79.33055	4.67	4.25
2008	Bear Creek 4	050202010016	39.56476	-79.32195	39.65018	-79.28886	4.00	4.50
2007	Bear Creek 5	050202010018	39.65482	-79.36370	39.65593	-79.33884	4.67	4.00
2003	Bear Creek UT 1	050202010018	39.64821	-79.34058	39.65559	-79.33808	5.00	4.50
2007	Bear Pen Run 1	021410060077	39.59163	-79.14355	39.57341	-79.12028	4.75	4.25
2007	Big Run UT 1	021410060078	39.57855	-79.19347	39.58348	-79.17124	4.00	4.75
2007	Blacklick Run 1	021410060080	39.63910	-79.09647	39.61727	-79.08702	4.00	4.25
2007	Buffalo Run 1	050202010019	39.68685	-79.40998	39.69053	-79.40417	4.67	4.00
2008	Buffalo Run 2	050202010019	39.69264	-79.43757	39.68915	-79.42334	4.00	4.25
2010	Casselma River 1	050202040034	39.66851	-79.17745	39.67513	-79.17104	4.67	4.00
2003	Crabtree Creek 1	021410060074	39.47779	-79.19210	39.50564	-79.15474	4.47	4.30
2003	Double Lick Run 1	021410060076	39.54257	-79.21921	39.53356	-79.20082	4.92	4.38
2007	Dry Run 1	021410060077	39.54299	-79.17013	39.52313	-79.14385	4.00	4.50
2007	Hoyes Run 1	050202010012	39.53193	-79.40384	39.52879	-79.41254	5.00	4.25
2003	Little Bear Creek 1	050202010016	39.65775	-79.26858	39.65019	-79.28882	4.50	4.25
2008	Little Savage River 1	021410060081	39.65111	-78.99097	39.59315	-79.04834	4.00	4.00
2003	Middle Fork Crabtree Creek 1	021410060076	39.51193	-79.16195	39.51261	-79.15403	4.67	4.50
2009	Middle Fork Crabtree Creek 2	021410060076	39.53353	-79.20087	39.53507	-79.18800	5.00	4.25
2003	Mill Run 1 (Garrett Co.)	050202010021	39.71883	-79.30088	39.70909	-79.34891	4.21	4.56
2003	Mill Run 2 (Garrett Co.)	050202010021	39.70907	-79.36308	39.71472	-79.38469	4.67	4.00
2003	Monroe Run 1	021410060078	39.54471	-79.22830	39.54944	-79.14434	4.00	4.25
2003	Poplar Lick Run 1	021410060079	39.59098	-79.10319	39.58389	-79.09140	4.50	4.38
2003	Puzzley Run 1	050202010022	39.69028	-79.22870	39.72189	-79.23219	4.00	4.75
2007	Savage River 1	021410060077	39.57974	-79.08983	39.56218	-79.11099	4.34	4.25
2003	Savage River 2	021410060077	39.56219	-79.11102	39.54306	-79.13744	4.72	4.29
2007	Savage River 3	021410060075	39.50101	-79.10657	39.48643	-79.08279	4.33	4.13
2009	Savage River 4	021410060081	39.59811	-79.05554	39.60227	-79.07229	5.00	4.50
2007	South Branch Bear Creek 1	050202010015	39.62367	-79.37594	39.65316	-79.38472	4.33	4.50
2007	South Branch Casselman River 1	050202040033	39.62616	-79.19151	39.64653	-79.18124	4.67	4.00
2007	South Branch Casselman River 2	050202040033	39.64814	-79.18152	39.66851	-79.17745	4.00	4.25
2007	Youghiogheny River UT 1	050202010020	39.67943	-79.35317	39.68632	-79.38164	4.00	4.00

*IBI = Index of Biotic Integrity

Updated March 2010