

Deep Creek Lake Bathymetry

*About producing the water depth contours
of Deep Creek Lake from data collected by
DNR during the spring of 2012*

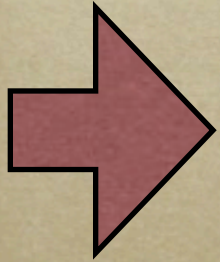
Summary of Work Performed

*Pete Versteegen
July 29, 2013*

Outline

- *Short Overview of Progress*
- *The Lake's Bathymetry*
- *deepcreekanswers.com*
- *The Location of Boat Slips*
- *Lake Levels*

Outline



Short Overview of Progress

- *The Lake's Bathymetry*
- *deepcreekanswers.com*
- *The Location of Boat Slips*
- *Lake Levels*

Bathymetry Status

- *DNR water depth measurements made in April 2012 (Rich Ortt)*
- *Lake-wide bathymetry map produced by DNR (Rich Ortt; June 2012?)*
- *Detailed maps of over 30 coves produced by myself (December 2012)*
- *Lake-wide bathymetry map produced by myself (June 2013)*

Outline

- *Short Overview of Progress*



The Lake's Bathymetry

- *deepcreekanswers.com*
- *The Location of Boat Slips*
- *Lake Levels*

DNR at Work, April 2012



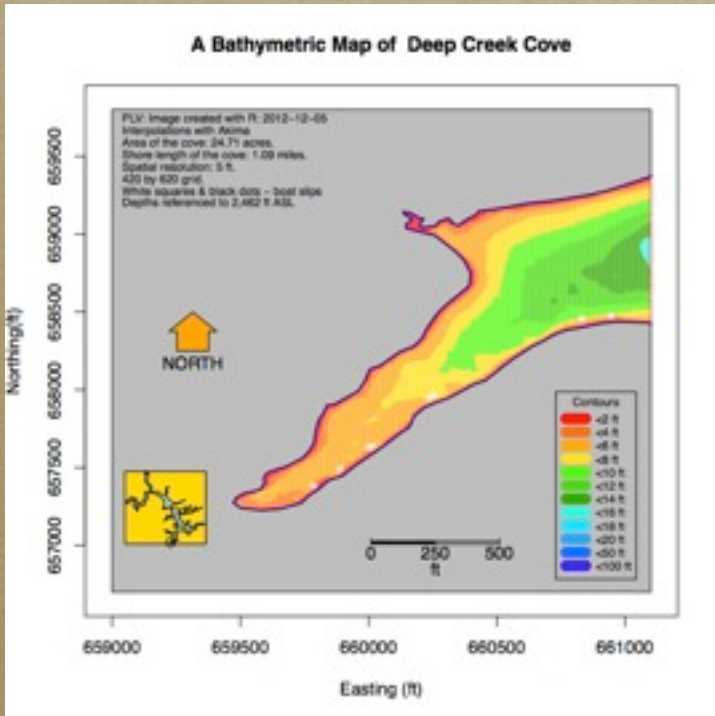
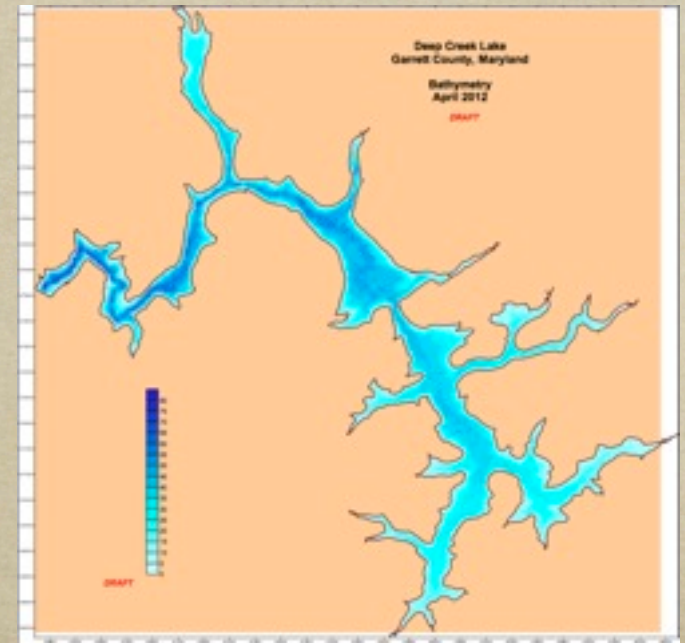
Monday, July 29, 13

	Number	Depth	Easting	Northing
1	1	3.46	656335.2	677070.5
2	2	3.46	663950.7	659598
3	3	3.49	656101.7	677073.3
4	4	3.49	656118.5	677139.4
5	5	3.49	656119.8	677140.7
6	6	3.49	656313.1	677031.2
7	7	3.49	656365.4	677070.2
8	8	3.49	657255.5	677598.5
9	9	3.49	657268.5	677603.5
10	10	3.49	657384.8	664818.9
11	11	3.49	658176.1	663349.5
12	12	3.49	659535.8	657245.9
13	13	3.49	659627.2	657255.1
14	14	3.49	659706.8	657344.7
15	15	3.49	659708.6	672632.9
16	16	3.49	659717.5	657512.7
17	17	3.49	659973.7	657974.6
18	18	3.49	660068.5	658159.4
19	19	3.49	661853.9	657598.5

*DNR
Data*



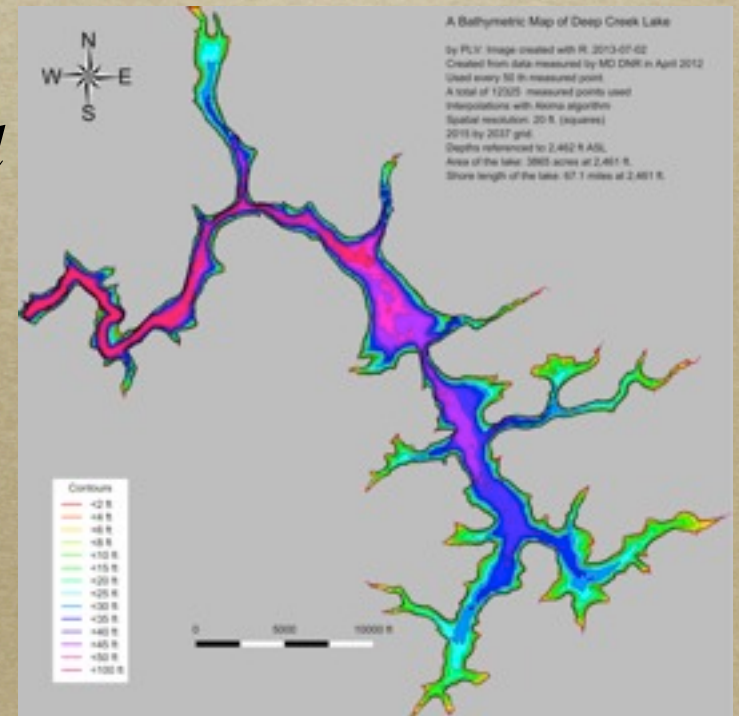
*DNR
Draft Map*

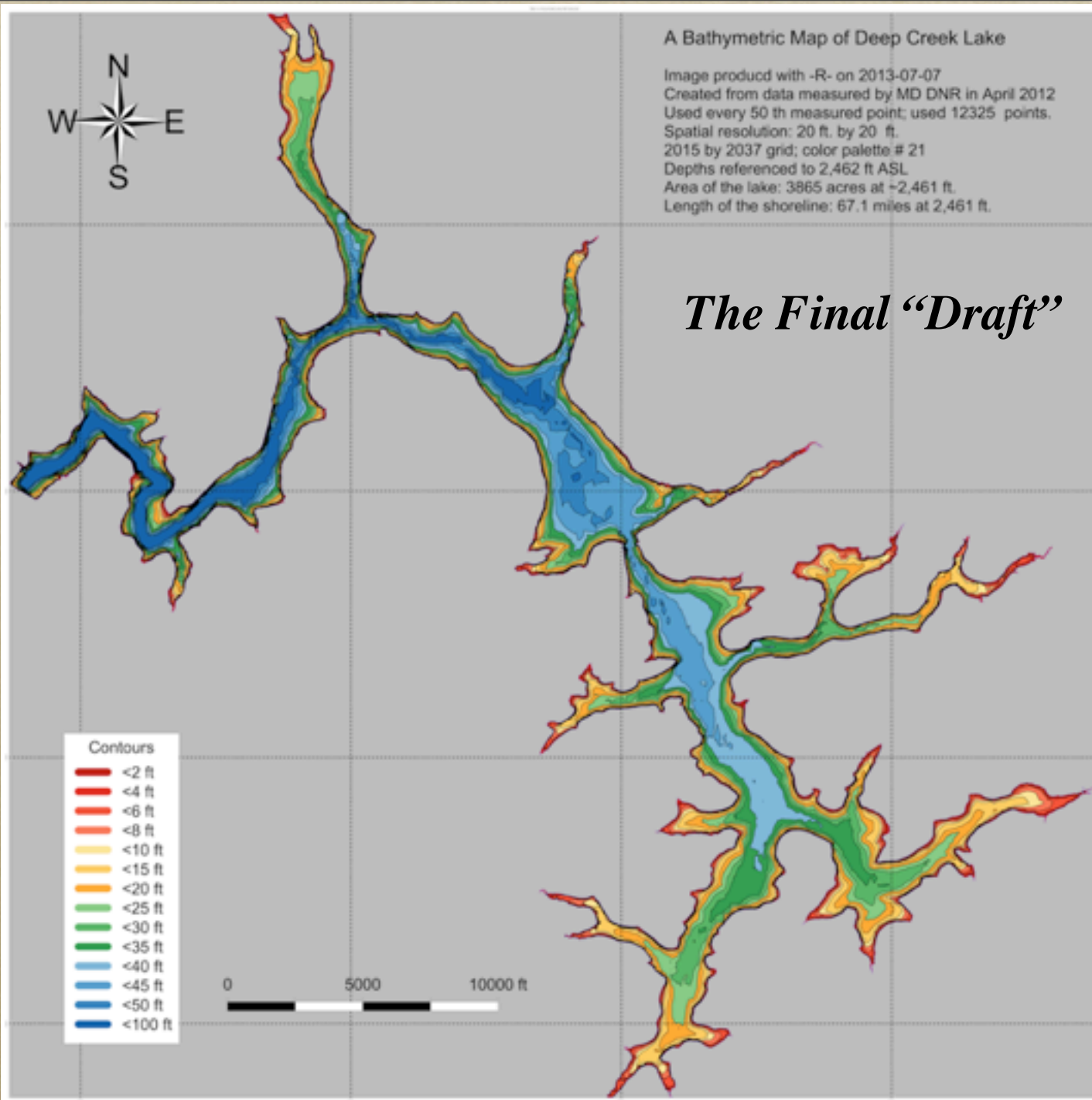


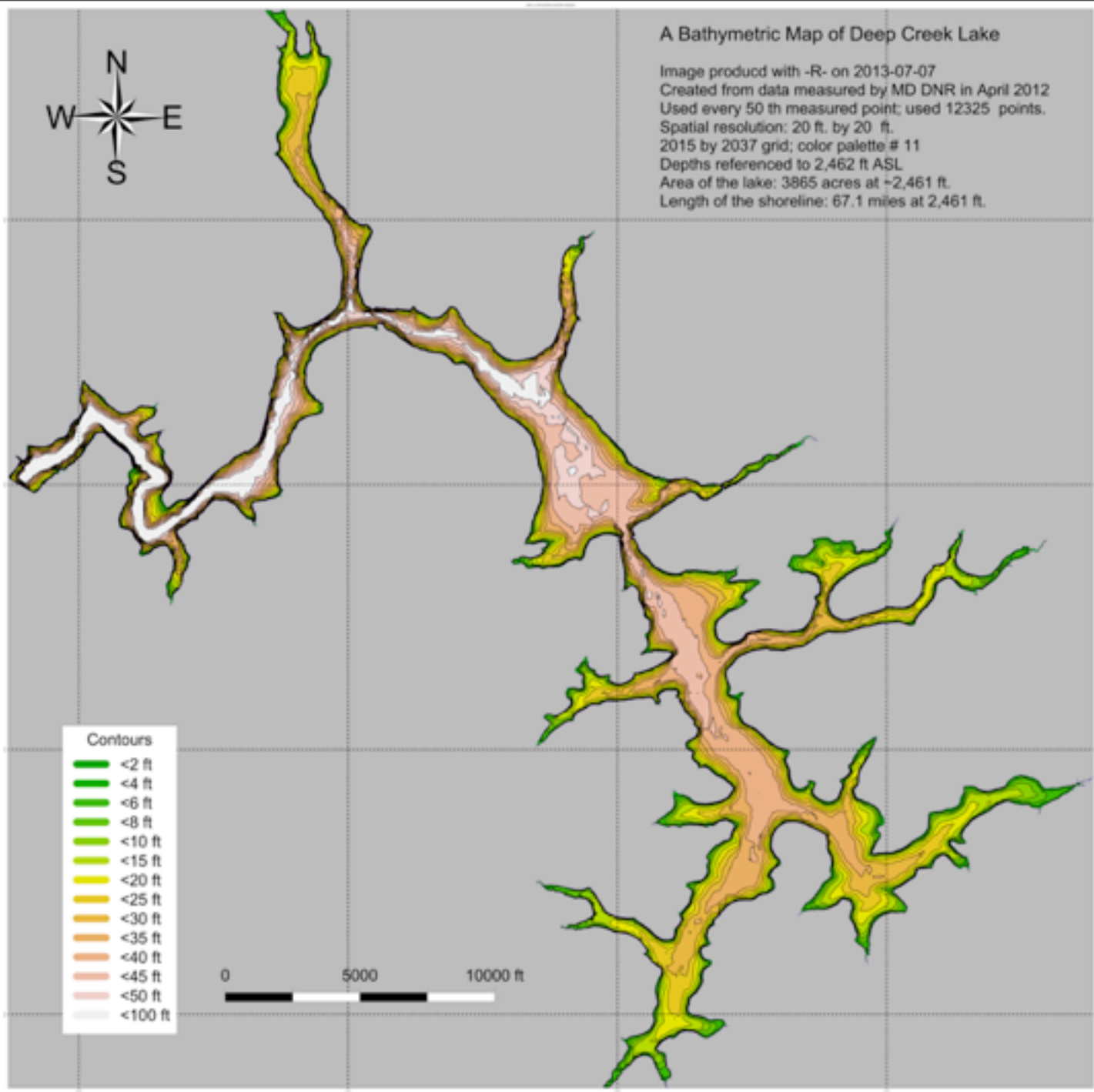
*PLV
Cove Detail*



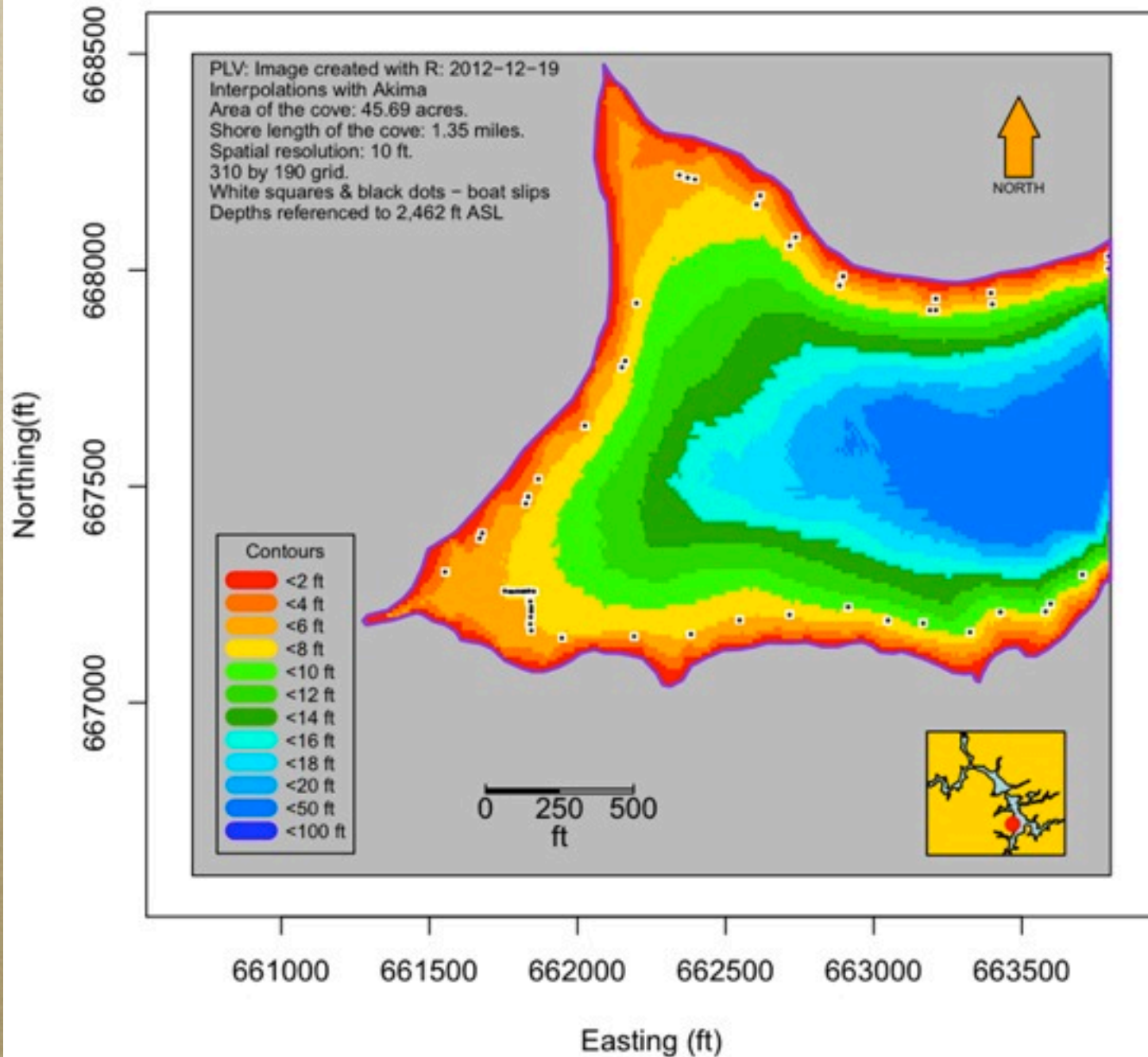
*PLV
Draft Map*





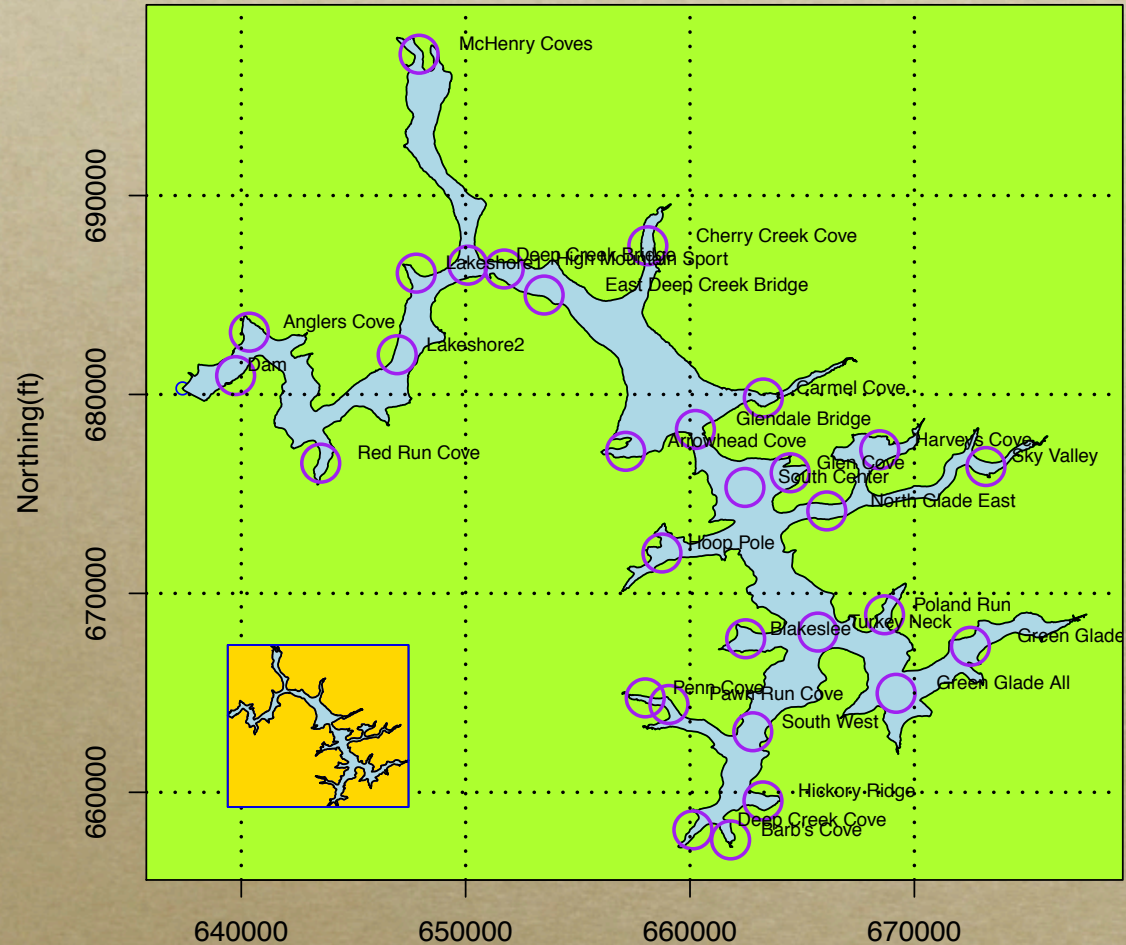


A Bathymetric Map of Blakeslee



Areas With Bathymetry So Far

Cove Locations for which the Bathymetry can be computed



(These are the locations for which the coordinates have already been extracted.)

Where Can I Find Them?

Go to: <http://www.deepcreekanswers.com>

top menu

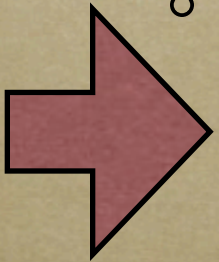
projects → *first item in the list* → *first item in the list*

side menu

projects → *bathymetry* → *first item in the list*

Outline

- *Short Overview of Progress*
- *The Lake's Bathymetry*
- ***deepcreekanswers.com***
- *The Location of Boat Slips*
- *Lake Levels*



Ask A Question About Deep Creek Lake

We all have a stake in the lake!

A comprehensive index about questions and answers of anything and everything about Deep Creek Lake, Potomac, MD

Home FAQ About Contact Privacy Login



We are a small group of people, going by the name of SPORE, who are attempting to collect meaningful data and information about Deep Creek Lake and to provide some understanding on how best to use this magnificent resource. This website reports our findings.

We are concerned about the future well-being of the lake. If left to its own, the lake will transform into marsh land, something that most of us don't want to see happen. After all, it's a manmade lake, requiring manmade interventions when changes need to take place. We need to understand how it functions under the pressures of humanity. Check out the pages of this website. There are a ton of links of information on it, over 400 pages. We welcome comments, suggestions, and feedback. A lot of things can be appreciated.

This website is best viewed with Chrome, Firefox or Safari
The efforts reported herein, are a work in progress!
Your feedback, good or bad, is greatly appreciated. Check back often.

Recent Additions!!

- 7/18/2013 - [A bathymetry of the whole lake](#) (8.7MB).
- 4/1/2013 - [An evaluation of the potential use of 2,4-D to combat Eurasian Watermillet.](#)

Click on the image below for more - It changes daily, randomly.



Recent Changes

For all of the previous changes made to this website, check [here](#).

Recent Changes

For all of the previous changes made to this website, check [here](#).

Changes on: 7/18/2013

- Just completed the [bathymetry of the whole lake](#) with a visually pleasing color scheme (8.7MB).
- [All kinds of color schemes were investigated](#), some tell a story clearly showing the downwards sloping terrain towards the dam in which the lake was created.

Changes on: 2/4/2013

- [Frequently asked questions of DNR](#) A DNR set of answers to questions (FAQ), many which were asked at the recent Policy Review Board (PRB) meeting (Jan 2013), including expenditures, funding sources, water quality, sedimentation, sub-aquatic vegetation (SAV), algal blooms, lake level, and others.
- [Subaquatic vegetation present in Deep Creek Lake](#). Appendix A of a report on SAV by DNR, describing the majority of the SAV species present in Deep Creek Lake. Note the links to other sources of SAV descriptions at the end of this document.

Changes on: 1/15/2013

- [DNR map of areas from which methane concentrations from wells are desired](#). This map shows the areas DNR is interested in for samples of well water to determine methane content. As available, is a DNR report describing the results from a sampling project for [dissolved methane in 49 wells in Garrett County](#).

Changes on: 1/30/2013

- More tweaking since the last time. The website now operates under the HTML5 DOM in order to take advantage of modern tools. You might see a new change in the left bar - the current lake level is added (updated every 10 minutes) and checked to see if it is above the upper rule band or below the lower ruleband. If it does, then the appropriate value for the rule band is highlighted in green; red is not very contrasty.

Changes on: 7/18/2013

- A lot of tweaking has been done in the past few days, here and there, and fixed all broken links. We're working on some other additions, but they will take a few weeks to complete. In the meantime please, please, do provide feed back, good or bad. My testing software says that I have 1,739 links, all working.

Changes on: 1/16/2013

- Since the last update a lot of small changes and one big change have been made. The big change is a reorganization of the menu items and list them in alphabetical order. Just explore the website to discover them. It's shaking out that there are three major categories: Info, Projects and Topics. Info is generally collected information; Projects are topics that we have started some work on; Topics are graduated projects for which we have collected and generated plenty of information.

Changes on: 1/5/2013:

- We've started the new year, 2013..., hopefully on a good foot. HAPPY NEW YEAR to all. A couple of items have been added. Notable is an image of some topic of interest. Right now it is the daily average, maximum and minimum water levels and hours of generator time for all of 2012. It can be found under a new topic, "Analyses," on the left side menu, or you can go to it directly from [here](#) or click on the image above. In the near future this is going to be a random image every day which will direct you to an appropriate part of the website. Also added, under the same menu item, are some analyses of flow over the spillway during an extreme rain event.

"If we can but prevent the government from wasting the labours of the people, under the pretence of taking care of them, they must become happy." - Thomas Jefferson to Thomas Cooper, 20 November 1804 - [Paul O'Rourke](#)

We apologize for such a detailed and complicated website, but we haven't had the time to make simple one! [A modification of Pascal's Answer.](#)

Any comments or questions on the content or organization of this website, please e-mail to [Deep Creek Answers Dot Com](#)

© 2013 PLV - This website is provided courtesy of [SeraTech, LLC](#)

The site was last updated on 29 July 2013, the data section every day. [Sitemap](#)

deepcreekanswers.com

What is on www.deepcreekanswers.com?

Bathymetry

*Shoreline
Erosion*

SAV

*Gage
Readings*

*Maps of
All Kinds*

Groundwater

Buy-down

Water Budget

*Images &
Reports*

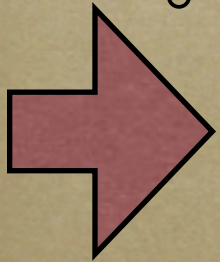
Water Quality

History

etc...

Outline

- *Short Overview of Progress*
- *The Lake's Bathymetry*
- *deepcreekanswers.com*
- ***The Location of Boat Slips***
- *Lake Levels*



Depth at Boat Slip Locations

- *The idea was to generate maps of water depth when the lake was at a certain level*
- *People can make decisions as to:*
 - * *when to move the docks*
 - * *when to take their boats out of the water*

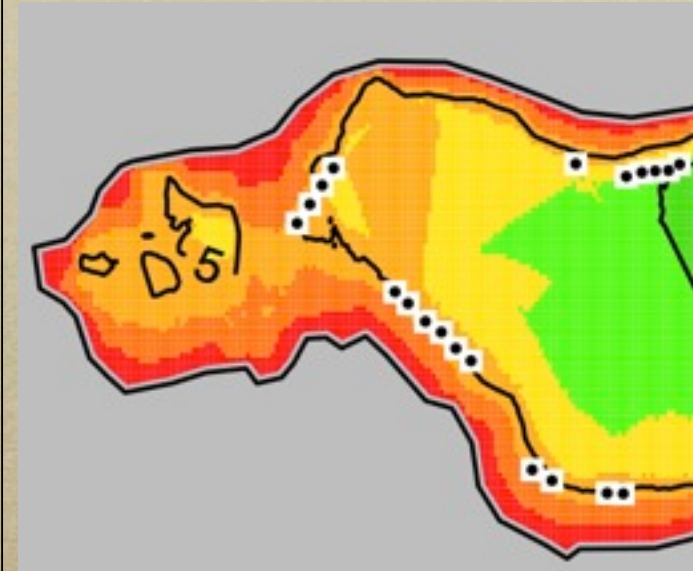
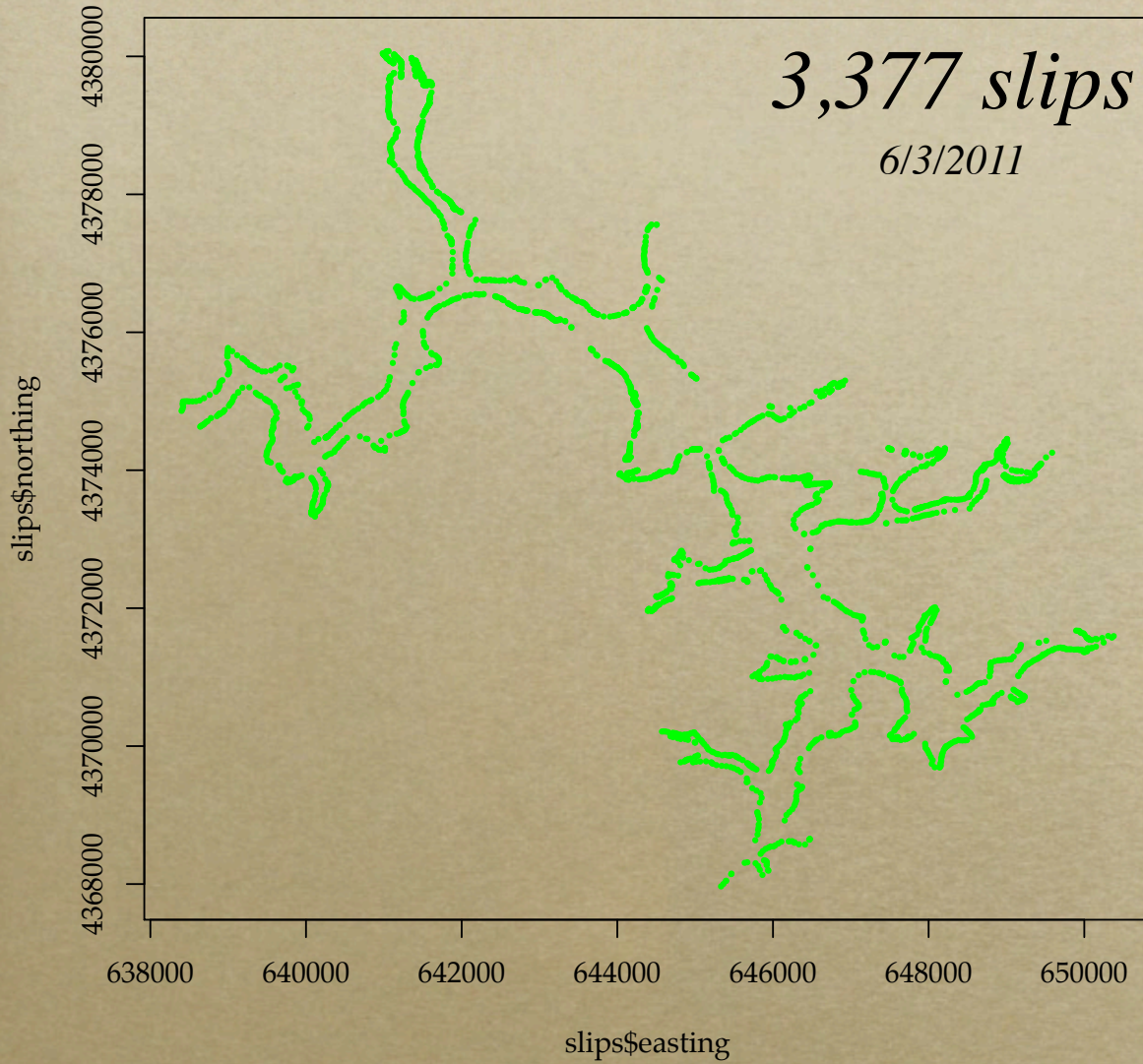
GoogleEarth Imagery - Deep Creek Cove



6/3/2011



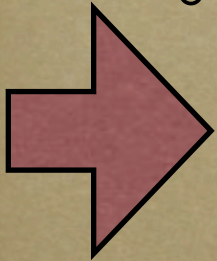
Digitized Boat "Slips"

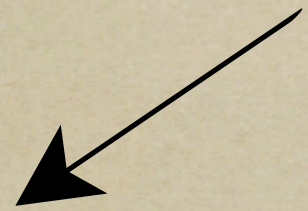


Outline

- *Short Overview of Progress*
- *The Lake's Bathymetry*
- *deepcreekanswers.com*
- *The Location of Boat Slips*

Lake Levels





Lake Level

We are a
collect m
understan
findings.

We are co
transform
all, it's a
place. We
out the pa
pages. W
appreciat

Current Date
28 Jul 2013

Gage Time
07:48

Upper Rule Band
2461.0

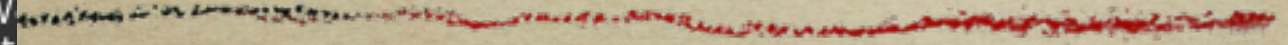
Current Level
2460.5

Lower Rule Band
2459.0

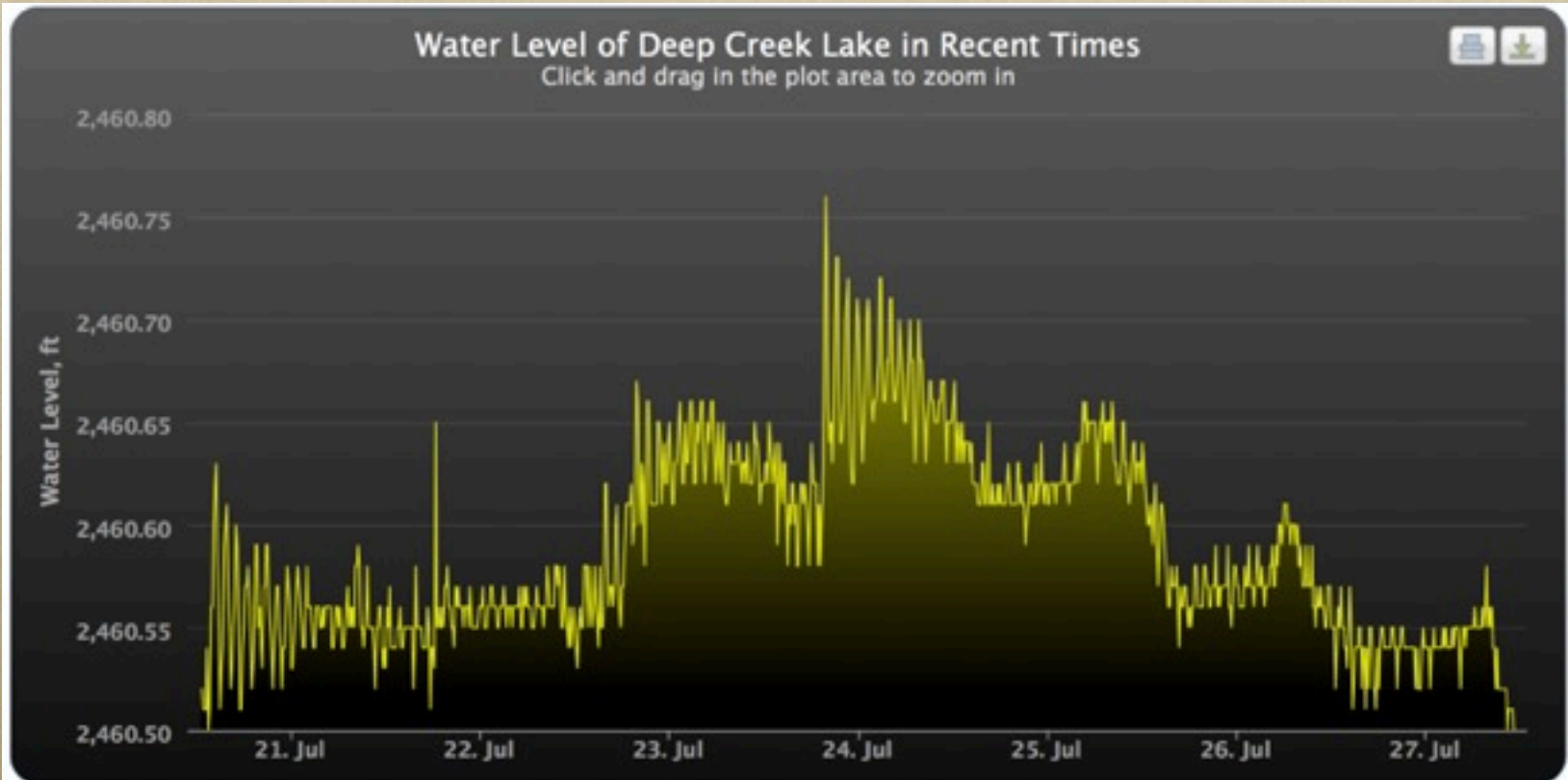
Status: OFF

1. 7/
2. 4/

Home



Lake Levels - raw data



Above is a graph of about 7 days worth of lake level measurements as published on the [deepcreeklakehydro](#) website. The days covered are of this year, 2012. The data points that make up the graph represent measurements recorded every 10 minutes. The plot is made up of a little over 1,000 data points.

You may download the raw data [here](#).

[HOME](#)

[PREVIOUS CHART](#)

[LIST OF CHARTS](#)

[NEXT CHART](#)

Lake Levels - smoothed data



This is the same data as on the previous plot, about 7 days worth of lake level measurements, as published on the [deepcreeklakehydro](#) website, but smoothed with a 25 point center moving average filter kernel. The data points represent measurements recorded every 10 minutes. The chart is made up of 1,000 data points.

[HOME](#)

[PREVIOUS CHART](#)

[LIST OF CHARTS](#)

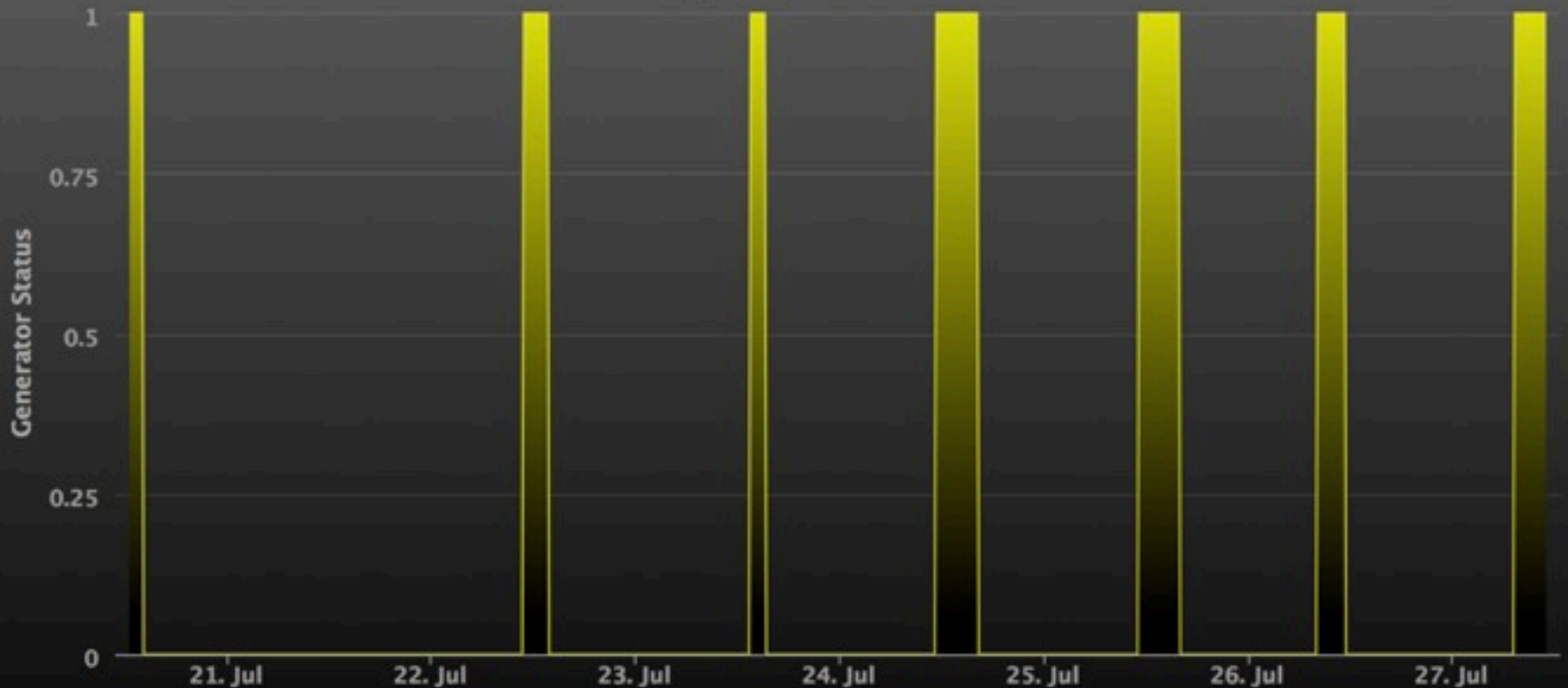
[NEXT CHART](#)

Generator Status

Status of the Hydro Electric Power Plant of Deep Creek Lake in Recent Times



Click and drag in the plot area to zoom in



[HOME](#)

[PREVIOUS CHART](#)

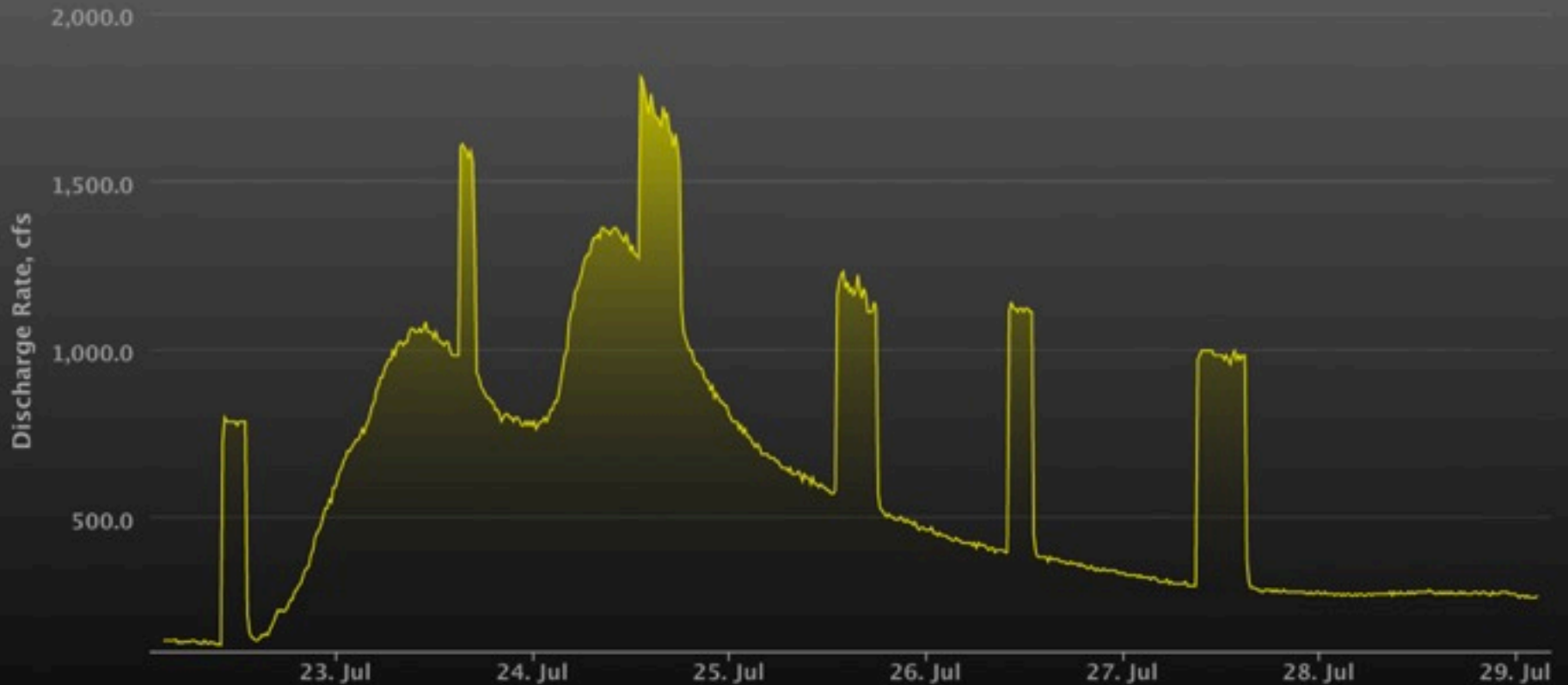
[LIST OF CHARTS](#)

[NEXT CHART](#)

Flow Gage at Hoyes Run

Discharge Rate at Hoyes Run during the last week

Click and drag in the plot area to zoom in



[HOME](#)

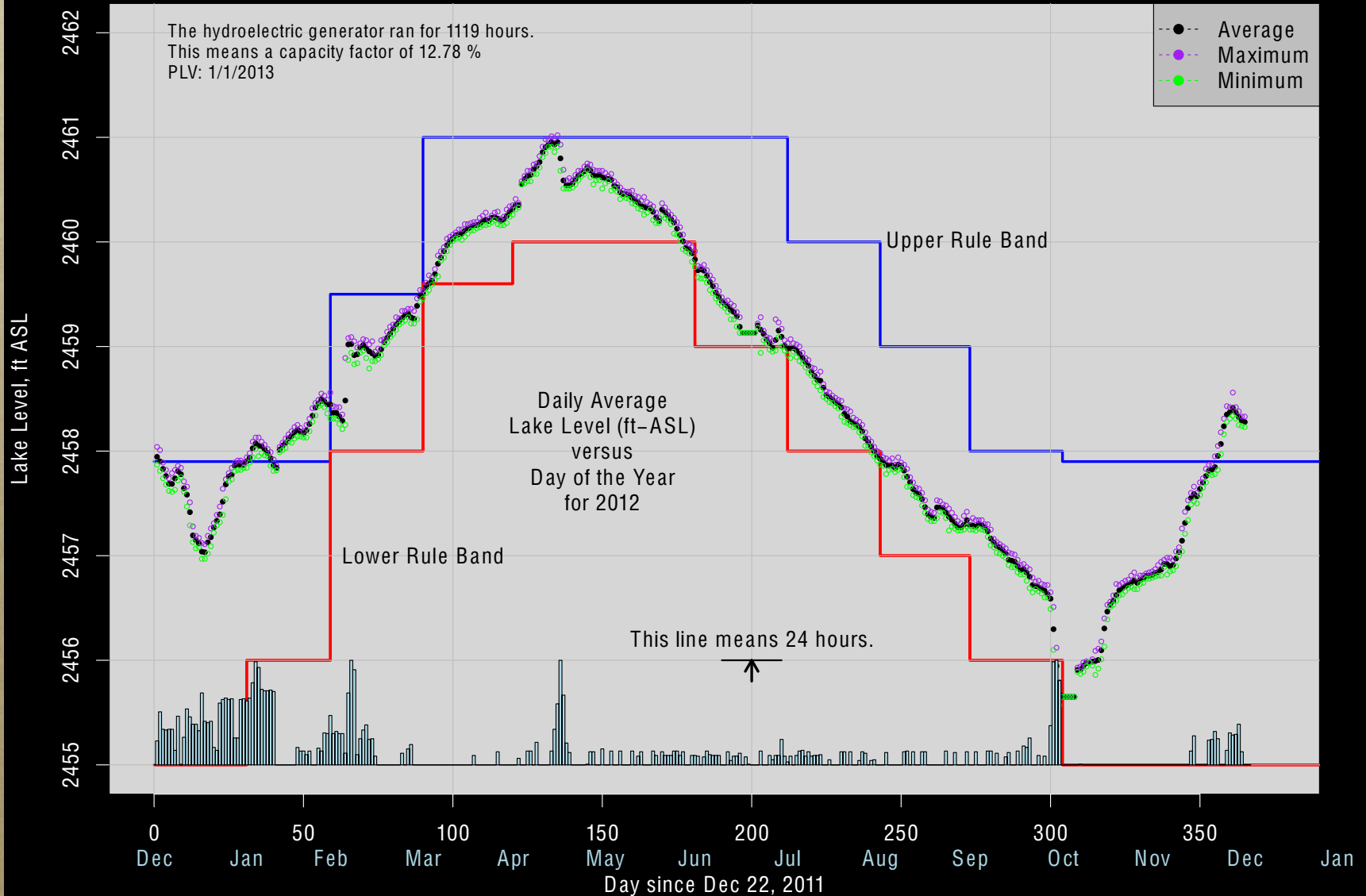
[PREVIOUS CHART](#)

[LIST OF CHARTS](#)

[NEXT CHART](#)

2012 Lake Level Summary

Lake level readings by 'deepcreekhydro.com' for 2012.
Augmented by the number of hours per day that the generator is running.



More Common View of Rule Band Adherence

