

**PENELEC CALLS**

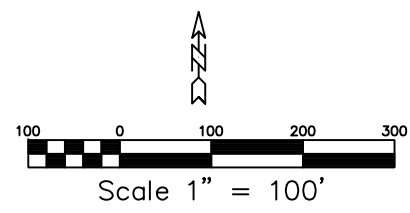
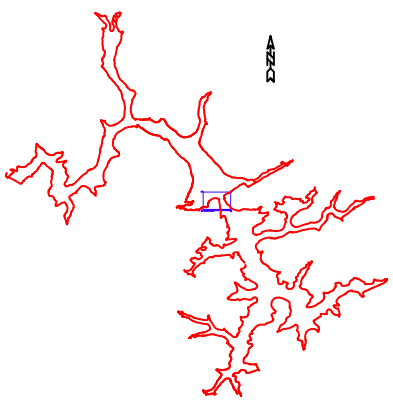
CONC.MON.NO.	BEARING	DISTANCE
Y-72	Y-73	S 14° 02' W, 105.50 FT.
Y-73	Y-74	S 20° 06' E, 218.30 FT.
Y-74	Y-75	S 85° 55' W, 140.40 FT.
Y-75	Y-76	SOUTH EAST, 80.00 FT.
Y-76	Y-77	S 31° 46' E, 311.20 FT.
S-78C	S-78B	S 58° 14' W, 9.85 FT.
S-78B	S-78A	S 13° 46' E, 95.00 FT.
S-78A	S-78	N 58° 14' E, 9.85 FT.
S-78	X-310	S 31° 46' E, 127.90 FT.

**SURVEY CALLS**

CONC.MON.	BEARING	DISTANCE
Y72-Y73	S 16°07' W	105.26'
Y73-Y74	S 19°35' E	221.96'
Y74-Y75	S 69°09' W	144.37'
Y75-Y76	S 01°55' E	30.00'
Y76-Y77	S 79°56' E	104.04'
Y77-S78C	S 30°05' E	311.21'
S78C-S78B	S 59°08' W	9.86'
S78B-S78A	S 29°47' E	95.13'
S78A-S78	N 58°30' E	10.25'
S78-X310	S 30°06' E	127.84'

P-196	SS-191	N 08° 32' W, 1045.00 FT.
SS-191	SS-190	N 75° 30' E, 33.40 FT.
SS-190	SS-189	N 06° 42' W, 269.10 FT.
SS-189	N-819	N 75° 30' W, 42.05 FT.
N-819	N 538	N 03° 17' W, 341.50 FT.
N-538	S-55F	N 82° 59' W, 142.00 FT.
S-55F	S-55E	N 46° 15' E, 85.79 FT.
S-55E	S-55D	N 71° 13' W, 145.30 FT.
S-55D	S-55C	N 79° 46' W, 131.05 FT.
S-55C	S-55B	N 87° 52' W, 137.32 FT.
S-55B	S-55A	S 72° 19' W, 112.01 FT.
S-55A	SS-118	S 61° 47' W, 175.55 FT.
SS-118	Y-56	S 38° 28' E, 37.71 FT.
Y-56	SS-36	S 47° 03' W, 307.00 FT.
SS-36	SS-39	N 37° 36' W, 85.61 FT.
SS-39	SS-38	S 32° 58' W, 63.45 FT.
SS-38	SS-37	S 37° 36' E, 70.20 FT.
SS-37	Y-57	S 47° 03' W, 31.20 FT.
Y-57	Y-58	S 12° 45' W, 543.40 FT.
Y-58	N-540	S 50° 27' W, 230.10 FT.
N-540	Y-59	N 76° 51' W, 336.40 FT.
Y-59	Y-60	S 56° 50' W, 603.30 FT.
Y-60	N-541	S 84° 51' W, 762.50 FT.

SS191-SS190	N 76°42' E	35.49'
SS190-SS189	N 05°52' W	268.68'
SS189-N819	S 76°04' W	41.34'
N819-N538	N 02°19' W	343.56'
N538-S55F	N 81°35' W	158.84'
S55F-S55E	N 53°55' E	94.15'
S55E-S55D	N 68°44' W	145.29'
S55D-S55C	N 79°50' W	131.66'
S55C-S55B	N 86°33' W	137.51'
S55B-S55A	S 73°52' W	111.77'
S55A-SS118	S 63°13' W	175.47'
SS118-Y56	S 37°08' E	38.13'
Y56-SS36	S 47°49' W	307.49'
SS36-SS39	N 36°38' W	85.41'
SS39-SS38	S 33°56' W	63.90'
SS38-SS37	S 37°06' E	70.76'
SS37-Y57	S 49°18' W	19.84'
Y57-Y58	S 14°13' W	550.69'
Y58-N540	S 52°10' W	236.11'
N540-Y59	N 76°30' W	322.32'
Y59-Y60	S 58°28' W	607.88'
Y60-N541	S 86°40' W	765.83'



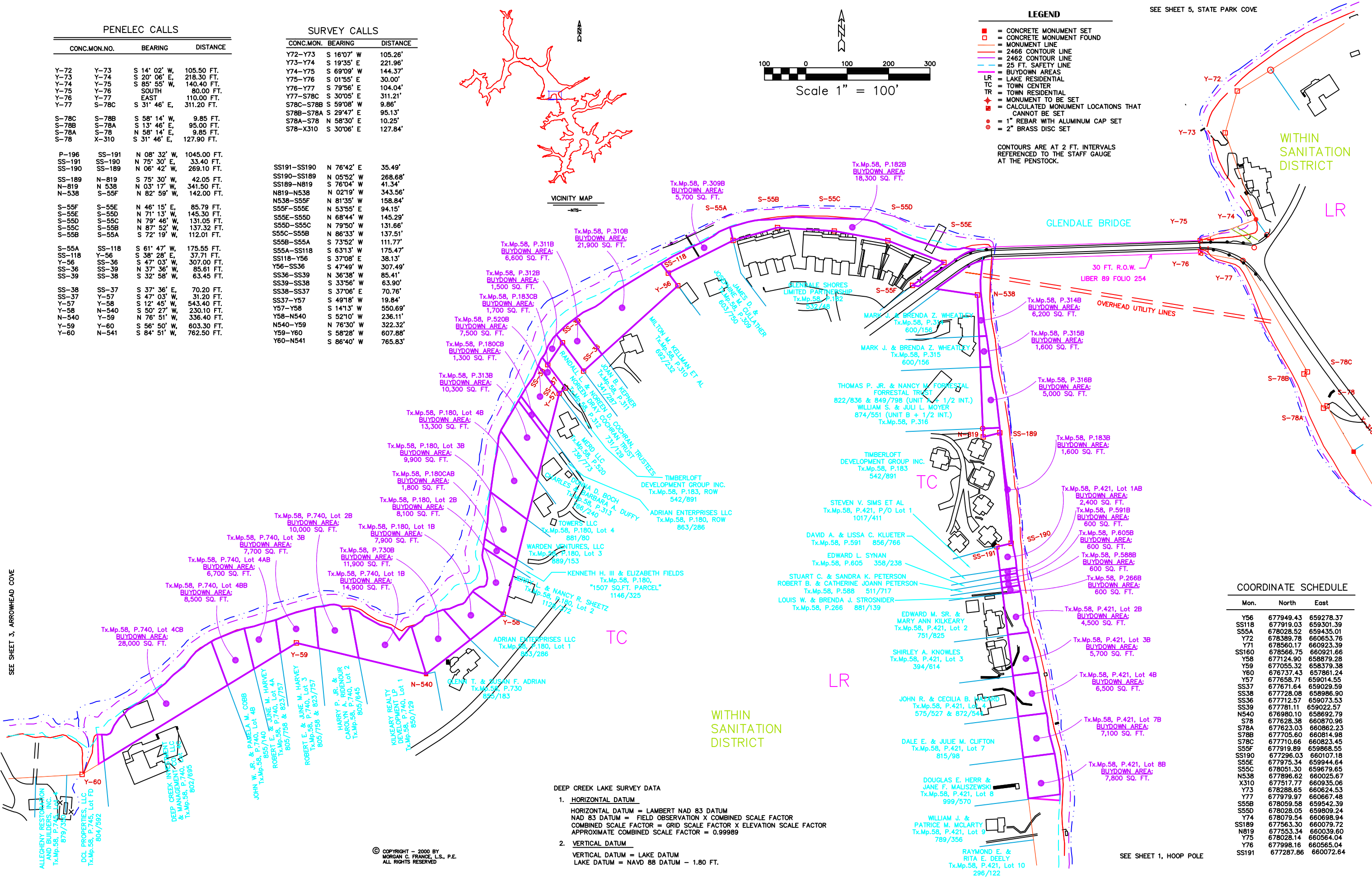
**LEGEND**

- CONCRETE MONUMENT SET
- CONCRETE MONUMENT FOUND
- MONUMENT LINE
- 2466 CONTOUR LINE
- 2462 CONTOUR LINE
- 25 FT. SAFETY LINE
- BUYDOWN AREAS
- LAKE RESIDENTIAL
- TOWN CENTER
- TOWN RESIDENTIAL
- MONUMENT TO BE SET
- CALCULATED MONUMENT LOCATIONS THAT CANNOT BE SET
- 1" REBAR WITH ALUMINUM CAP SET
- 2" BRASS DISC SET

CONTOURS ARE AT 2 FT. INTERVALS REFERENCED TO THE STAFF GAUGE AT THE PENSTOCK.

SEE SHEET 5, STATE PARK COVE

SEE SHEET 3, ARROWHEAD COVE



**COORDINATE SCHEDULE**

Mon.	North	East
Y56	677949.43	659278.37
SS118	677919.03	659301.39
S55A	678028.52	659435.01
Y72	678389.78	660653.76
Y71	678560.17	660923.39
SS160	678566.75	660921.66
Y58	677124.90	658879.28
Y59	677055.32	658379.38
Y60	678737.43	657861.24
Y57	677658.71	659014.55
SS37	677671.64	659029.59
SS38	677728.08	658986.90
SS36	677712.57	659073.53
SS39	677781.11	659022.57
N540	676980.10	658692.79
S78	677628.38	660870.96
S78A	677623.03	660862.23
S78B	677705.60	660814.98
S78C	677710.66	660823.45
S55F	677919.89	659868.55
SS190	677296.03	660107.18
S55E	677975.34	659944.64
S55C	678051.30	659679.65
N538	677896.62	660025.67
X310	677517.77	660935.06
Y73	678288.65	66024.53
Y77	677979.97	660667.48
S55B	678059.58	659542.39
S55D	678028.05	659809.24
Y74	678079.54	660698.94
SS189	677563.30	660079.72
N819	677553.34	660039.60
Y75	678028.14	660564.04
Y76	677998.16	660565.04
SS191	677287.86	660072.64

**DEEP CREEK LAKE SURVEY DATA**

- HORIZONTAL DATUM**  
HORIZONTAL DATUM = LAMBERT NAD 83 DATUM  
NAD 83 DATUM = FIELD OBSERVATION X COMBINED SCALE FACTOR  
COMBINED SCALE FACTOR = GRID SCALE FACTOR X ELEVATION SCALE FACTOR  
APPROXIMATE COMBINED SCALE FACTOR = 0.99989
- VERTICAL DATUM**  
VERTICAL DATUM = LAKE DATUM  
LAKE DATUM = NAVD 88 DATUM - 1.80 FT.

© COPYRIGHT - 2000 BY MORGAN C. FRANCE, L.S., P.E. ALL RIGHTS RESERVED